

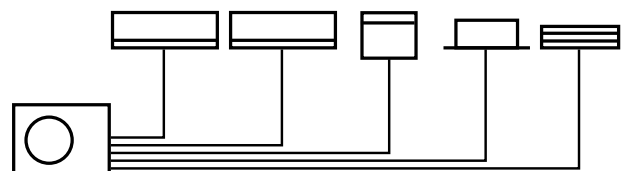
# Panasonic

## NEW FREE MULTI SYSTEM Z

Up to 5 indoor units with  
a single outdoor unit

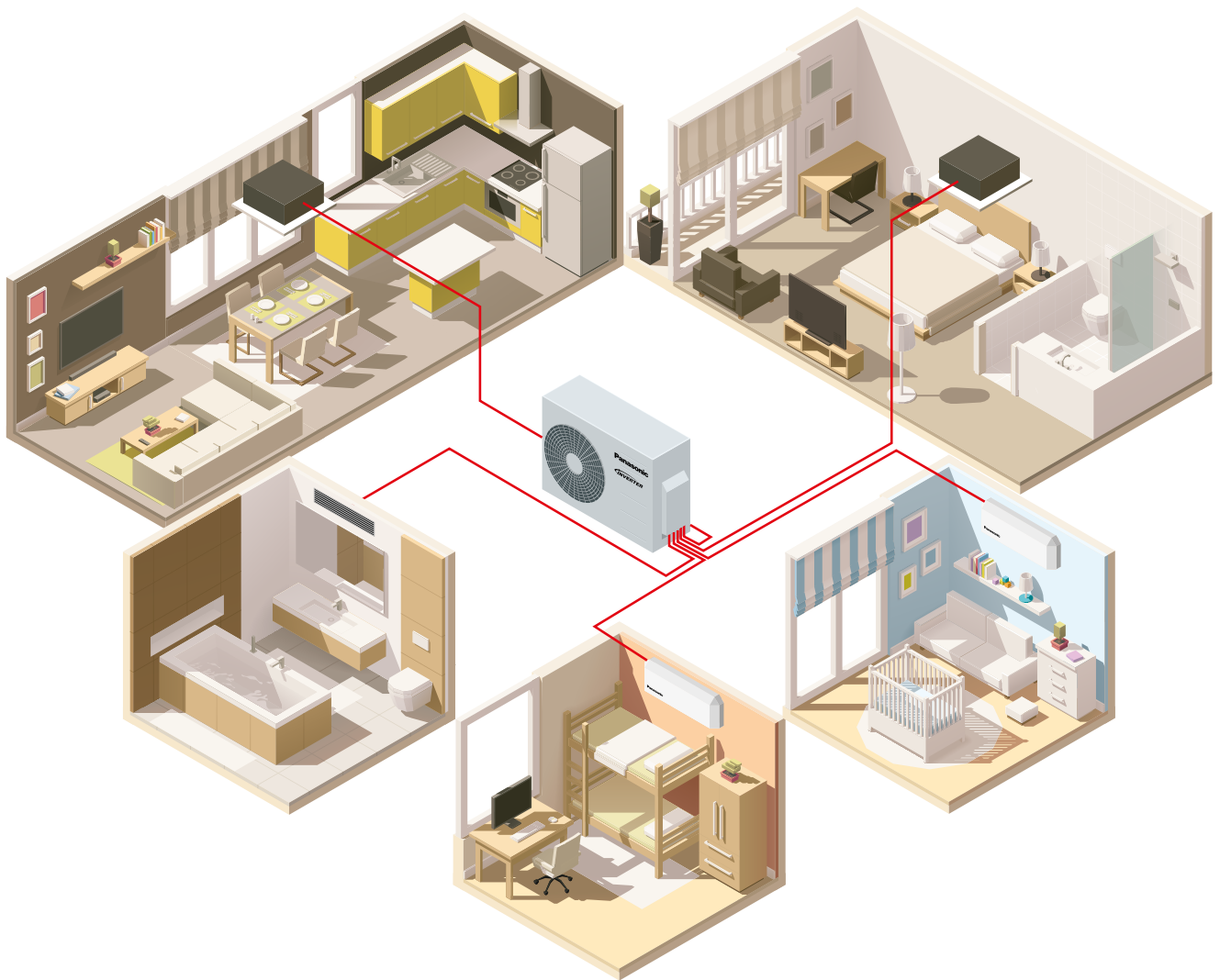


60<sup>th</sup> Anniversary



heating & cooling solutions

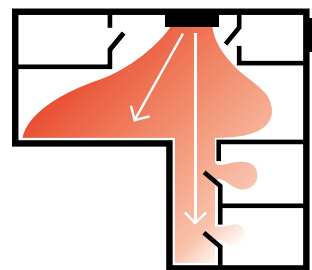
# FOR MAXIMUM FLEXIBILITY AND CUSTOMISATION THE FREE MULTI HAS THE ANSWER



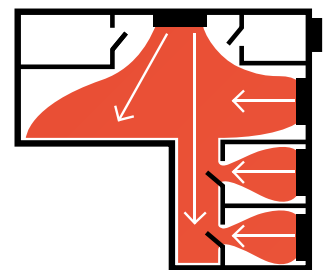
Panasonic Free Multi bring comfort to your whole home or office. One compact, single unit can connect with up to five indoor units, saving space outside. Each room will have independent control so occupants can enjoy more precise temperature control and energy savings when the room is not in use. New generation refrigerant R32 allows excellent performance credentials, achieving A+++ and minimizing the environmental impact.

- Up to 5 rooms with individual control
- Wide choice of indoor units to adapt to each room
- Units with Nanoe air purifier
- Stylish and premium design
- High Efficiency: Up to A+++ energy efficiency Class
- Flexible installation, compact units and large connection distance
- Using new R32 refrigerant.
- Phone control whenever and wherever (optional)

## Why a Multi Split is better than several separate split units



**Solution with single split**  
One indoor unit is connected to one outdoor unit. The indoor unit is placed in the main hallway and heats the entire house. Certain rooms may not be perfectly heated, which causes inadequate comfort.



**Solution with Multi Split**  
With one outdoor unit, you can connect up to five indoor units. There is one indoor unit per room or area. It gives an extreme increase in comfort levels. Outside, there is only one outdoor unit.

Full flexibility up to 10kW and up to 5 ports with wide range of indoor units, including high performance Etherea indoor units, reaching up to A+++/A++ and using new generation R32 refrigerant

### Living an eco-lifestyle your way is now easier than ever

Compared to R22 and R410A, R32 has a very low potential impact on the depletion of the ozone layer and global warming.

European regulation EU 517/2014 makes the replacement of fluorinated gases (F-gases) compulsory, such as R410A, for environmental reasons, although it also grants a transition period from 2017 to 2030.

Must we wait? No. Our commitment to innovation is not hampered by dates. Which is why we are jumping the gun and are now presenting our generation of air conditioners that employ the R32 refrigerant.

#### 1. Installation innovation

- As easy to install as R410a systems.
- This refrigerant is 100% pure, which makes it easier to recycle and reuse

#### 2. Environmental innovation

- Zero impact on the ozone layer
- 75% less impact on global warming

#### 3. Economic and energy consumption innovation

- Lower cost and greater savings: 30% less refrigerant
- Higher energy efficiency than R410A



### A wide range of possibilities

Panasonic offers you the solution that perfectly matches your project in terms of total capacity, single indoor capacity and indoor type choice. Size, performance, quiet operation and other exceptional features can be chosen amongst Panasonic's free multi range.

#### Outdoor Unit. System Capacity (Min - Max Indoor Cooling Capacity Nominal)

|  | 2 Rooms     |             | 3 Rooms     |             | 4 Rooms      |              | 5 Rooms      |              |
|--|-------------|-------------|-------------|-------------|--------------|--------------|--------------|--------------|
|  | 3,2 - 6,0kW | 3,2 - 6,0kW | 3,2 - 7,7kW | 4,5 - 9,5kW | 4,5 - 11,2kW | 4,5 - 11,5kW | 4,5 - 13,6kW | 4,5 - 17,5kW |
|  |             |             |             |             |              |              |              |              |
|  | CU-2Z35TBE  | CU-2Z41TBE  | CU-2Z50TBE  | CU-3Z52TBE  | CU-3Z68TBE   | CU-4Z68TBE   | CU-4Z80TBE   | CU-5Z90TBE   |

#### Indoor units • R32 GAS

| Capacity                                 |  | 16          | 20                          | 25                          | 35                          | 42            | 50                          | 60                          | 71          |
|--|--|-------------|-----------------------------|-----------------------------|-----------------------------|---------------|-----------------------------|-----------------------------|-------------|
| <b>Etherea Silver / Pure White Matt</b>  |  | CS-MZ16TKE  | CS-XZ20TKEW<br>CS-Z20TKEW   | CS-XZ25TKEW<br>CS-Z25TKEW   | CS-XZ35TKEW<br>CS-Z35TKEW   | CS-Z42TKEW    | CS-XZ50TKEW<br>CS-Z50TKEW   |                             | CS-Z71TKEW  |
| <b>Wall Mounted TZ Compact Style</b>     |  | CS-MTZ16TKE | CS-TZ20TKEW-1               | CS-TZ25TKEW-1               | CS-TZ35TKEW-1               | CS-TZ42TKEW-1 | CS-TZ50TKEW                 | CS-TZ60TKEW                 | CS-TZ71TKEW |
| <b>NEW Floor Console*</b>                |  |             | CS-MZ20UFEA                 | CS-Z25UFEAW                 | CS-Z35UFEAW                 |               | CS-Z50UFEAW                 |                             |             |
| <b>NEW 4 Way 60x60 Cassette</b>          |  |             | CS-MZ20UB4EA<br>/ CZ-BT20EW | CS-Z25UB4EAW<br>/ CZ-BT20EW | CS-Z35UB4EAW<br>/ CZ-BT20EW |               | CS-Z50UB4EAW<br>/ CZ-BT20EW | CS-Z60UB4EAW<br>/ CZ-BT20EW |             |
| <b>NEW Low Static Pressure Hide Away</b> |  |             | CS-MZ20UD3EA                | CS-Z25UD3EAW                | CS-Z35UD3EAW                |               | CS-Z50UD3EAW                | CS-Z60UD3EAW                |             |

# PANASONIC FREE MULTI GREAT SAVINGS AND IMPROVED WELLNESS

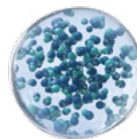


- The new Floor console has being designed to follow the high European demands: Superquiet operation, high efficiency and purifying the air with nanoe™ X.
- The Etherea has an astonishingly slim design that combines perfectly with the most modern environments. Improve the quality of the air with Etherea and nanoe™ air purifier.
- TZ indoors are really compact. With only 799mm width, the indoor unit can be easily fixed in the space over the door.
- Designed for homes, offices, retail and restaurants, the Low Static Pressure Hide Away is ideal for small rooms where the air conditioning and the heating should be nicely integrated and where high comfort and efficiency is needed

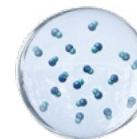
## Always fresh and clean air with nanoe™ X and nanoe™

**nanoe™ X and nanoe™ with nano-technology, nano-sized electrostatic atomised water particles purify the air in the room**

- Purificating operation can work simultaneously or independently from heating/cooling operation.
  - Inhibiting certain viruses, bacteria & deodorisation (bacteria, fungus, pollen, virus and cigarette smoke).
  - OH radicals in nanoe™ X pull bacteria's hydrogen out and it is effectively deodorised and sterilised
- nanoe™X and nanoe™ are nano-sized electrostatic atomized water particles with plentiful OH radicals. Its effectiveness of bacteria inhibition depends on the number of OH radical, which is generated:



nanoe™X: 4,800 OH radical billion per second with big Multi-leader discharge (OH radical production area)



nanoe™: 480 OH radical billion per second with a corona discharge (OH radical production area)

## High Energy efficiency class A+++ and A++

Comfort and high efficiency is possible when combining finest technology in a heat pump. Thanks to original Panasonic Inverter compressor, the heart of a heat pump, high levels of energy efficiency are reached. As consequence operating cost are substantially reduced. The system can heat even at -15°C outside.

### Electrical Heater vs Heat pump



\* COP of 4,8 for models CU-2235TBE and CU-5290TBE, COP calculation is based in accordance to EN14511.

Panasonic can offer you the solution that adapts to each of your rooms and bring comfortable environment all year long. Being also possible to improve the quality of the air by inhibiting the growth of certain bacteria and virus and reducing odors.



**Wall Mounted Etherea Silver / Pure White Matt**

**Etherea with enhanced Econavi sensor and new nanoe™ air-purifying system.** Outstanding efficiency, comfort and healthy air combined with state-of-the-art design.



**Wall Mounted TZ Compact Style**

**TZ compact indoor size.** New TZ indoor are compact and powerful. White Matt and compact design match any space with 799mm wide and clean the air with PM2,5 Filter.



NEW 18

**New Floor Console With new nanoe™ X air-purifying system.**

Outstanding comfort (Super Quiet technology only 20dB(A)) and healthy air combined with a breakthrough design



NEW 18

**Low Static Pressure Hide Away Designed for homes, offices, retail and restaurants.**

This duct is ideal for small rooms where the air conditioning and the heating should be nicely integrated and where high comfort and efficiency is needed.



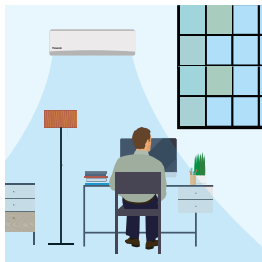
NEW 18

**4 Way 60x60 Cassette Ultra compact outdoor units for easy installation.**

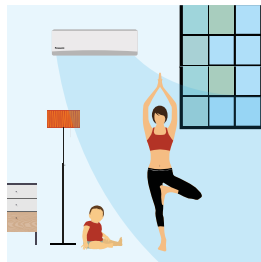
Specially designed for homes, offices, retail and restaurant applications. This cassette fits perfectly into 60x60 ceiling grids.

**5 Features saving energy all at once with Etherea and Econavi with intelligent eco sensors**

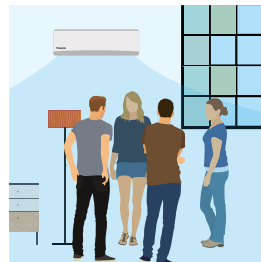
Intelligent Sensors detect potential waste of energy using the Human Activity Sensor and Sunlight Sensor. It is able to monitor human location, movements, absence and sunlight intensity. It then automatically adjusts cooling power to save energy efficiently with uninterrupted heating and cooling comfort and convenience. Econavi is available for Etherea indoor units.



**Temperature Wave**  
Rhythmic temperature-controlled pattern to save energy without sacrificing comfort.



**Area Search**  
Directs airflow to wherever you are in the room. Econavi detects changes in human movements and reduces the waste of cooling the unoccupied area of the room.



**Activity Detection**  
Adapts cooling power to your daily activities. Econavi detects changes in activity levels and reduces the waste of cooling with unnecessary power.



**Absence Detection**  
Reduces cooling power when you are not around. Econavi detects human absence in the room and reduces the waste of cooling an empty room.



**Sunlight Detection**  
Adjusts cooling power to changes in sunlight intensity.

**New Panasonic Wifi kit**

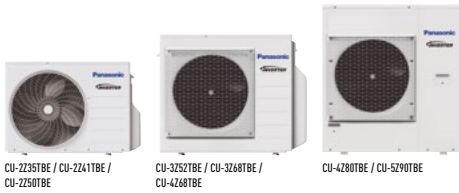
**Control your comfort and the power consumption with your smartphone**

With the new accessory CZ-TACG1 control the comfort and the power consumption with your smartphone or tablet via internet. Offering even more functions as if you were at home or office: start/stop, mode operation, set temperature, room temperature, weekly timer, etc as well as the new, advanced functionality provided by Internet Control to achieve better comfort and helping to increase the efficiency. Connect the CZ-TACG1 accessory to the indoor unit and link wireless to your home internet router.



One CZ-TACG1 is required per each indoor unit.





**Outdoor unit Free Multi System Z • R32 GAS**

| System Capacity (Min - Max Indoor Cooling Capacity Nominal) |                     |                         | 3,2 to 6,0kW     | 3,2 to 6,0kW     | 3,2 to 7,7kW     | 4,5 to 9,5kW     | 4,5 to 11,2kW    | 4,5 to 11,5kW    | 4,5 to 14,7kW    | 4,5 to 18,3kW     |
|---|---------------------|-------------------------|------------------|------------------|------------------|------------------|------------------|------------------|------------------|-------------------|
| Unit  |                     |                         | CU-2235TBE       | CU-2241TBE       | CU-2250TBE       | CU-3252TBE       | CU-3268TBE       | CU-4268TBE       | CU-4280TBE       | CU-5290TBE        |
| Cooling capacity  | Nominal (Min - Max) | kW                      | 3,50(1,50-4,50)  | 4,10(1,50-5,20)  | 5,00(1,50-5,40)  | 5,20(1,80-7,30)  | 6,80(1,90-8,00)  | 6,80(1,90-8,80)  | 8,00(3,00-9,20)  | 9,00(2,90-11,50)  |
| EER <sup>1)</sup>   | Nominal (Min - Max) | W/W                     | 4,86(6,00-4,09)A | 4,56(6,00-3,80)A | 4,24(6,00-3,62)A | 4,77 A           | 3,66(7,04-3,38)A | 4,39(5,59-3,56)A | 4,04(5,66-3,21)A | 4,09(5,27-2,98)A  |
| SEER <sup>2)</sup>  |                     | W/W                     | 8,50 <b>A+++</b> | 8,50 <b>A+++</b> | 8,50 <b>A+++</b> | 8,50 <b>A+++</b> | 8,00 <b>A++</b>  | 8,00 <b>A++</b>  | 7,90 <b>A++</b>  | 8,50 <b>A+++</b>  |
| Pdesign (cooling)   |                     | kW                      | 3,5              | 4,1              | 5,0              | 5,2              | 6,8              | 6,8              | 8,0              | 9,0               |
| Input power cooling   | Nominal (Min - Max) | kW                      | 0,72(0,25-1,10)  | 0,90(0,25-1,37)  | 1,18(0,25-1,49)  | 1,09(0,36-2,18)  | 1,86(0,27-2,37)  | 1,55(0,34-2,47)  | 1,98(0,53-2,87)  | 2,20(0,55-3,86)   |
| Annual energy consumption <sup>3)</sup>                     |                     | kWh/a                   | 144              | 169              | 206              | 214              | 298              | 298              | 990              | 1100              |
| Heating capacity  | Nominal (Min - Max) | kW                      | 4,20(1,10-5,60)  | 4,60(1,10-7,00)  | 5,60(1,10-7,20)  | 6,80(1,10-8,30)  | 8,50(3,30-10,40) | 8,50(3,00-10,60) | 9,40(4,20-10,60) | 10,40(3,40-14,50) |
| Heating capacity at -7°C                                    |                     | kW                      | —                | —                | —                | 3,95             | 4,45             | 4,45             | —                | —                 |
| COP <sup>1)</sup>   | Nominal (Min - Max) | W/W                     | 4,88(5,24-4,18)A | 4,79(5,24-3,91)A | 4,63(5,24-4,00)A | 4,72 A           | 3,95(5,32-3,64)A | 4,47(5,17-3,96)A | 4,63(6,00-3,46)A | 4,84(6,42-3,42)A  |
| SCOP <sup>2)</sup>  |                     | W/W                     | 4,60 <b>A++</b>  | 4,60 <b>A++</b>  | 4,60 <b>A++</b>  | 4,20 <b>A+</b>   | 4,20 <b>A+</b>   | 4,20 <b>A+</b>   | 4,70 <b>A++</b>  | 4,68 <b>A++</b>   |
| Pdesign at -10°C  |                     | kW                      | 3,2              | 3,5              | 4,2              | 5,0              | 5,2              | 5,8              | 6,8              | 8,5               |
| Input power heating   | Nominal (Min - Max) | kW                      | 0,86(0,21-1,34)  | 0,96(0,21-1,79)  | 1,21(0,21-1,80)  | 1,47(3,20-2,17)  | 2,15(0,62-2,86)  | 1,90(0,58-2,68)  | 2,03(0,70-3,06)  | 2,15(0,53-4,24)   |
| Annual energy consumption <sup>3)</sup>                     |                     | kWh/a                   | 974              | 1065             | 1278             | 1667             | 1733             | 1933             | 2026             | 2543              |
| Current   | Cool / Heat         | A                       | 3,35/4,00        | 4,15/4,45        | 5,35/5,50        | 5,00/6,70        | 8,40/9,70        | 7,00/8,60        | 9,50/9,50        | 10,50/10,10       |
| Power source  |                     | V                       | 230              | 230              | 230              | 230              | 230              | 230              | 230              | 230               |
| Recommended fuse  |                     | A                       | 16               | 16               | 16               | 16               | 16               | 20               | 20               | 25                |
| Recommended power cable section                             |                     | mm <sup>2</sup>         | 2,5              | 2,5              | 2,5              | 2,5              | 2,5              | 2,5              | 2,5              | 3,5               |
| Sound pressure <sup>4)</sup>                                | Cool / Heat (Hi)    | dB(A)                   | 48/50            | 48/50            | 50/52            | 47/48            | 51/52            | 49/50            | 51/52            | 53/54             |
| Dimension <sup>5)</sup>                                     | H x W x D           | mm                      | 619 x 824 x 299  | 619 x 824 x 299  | 619 x 824 x 299  | 795 x 875 x 320  | 795 x 875 x 320  | 795 x 875 x 320  | 999 x 940 x 340  | 999 x 940 x 340   |
| Net weight  |                     | kg                      | 39               | 39               | 39               | 71               | 71               | 72               | 80               | 81                |
| Piping connections  | Liquid pipe         | Inch (mm)               | 1/4(6,35)        | 1/4(6,35)        | 1/4(6,35)        | 1/4(6,35)        | 1/4(6,35)        | 1/4(6,35)        | 1/4(6,35)        | 1/4(6,35)         |
|   | Gas pipe            | Inch (mm)               | 3/8(9,52)        | 3/8(9,52)        | 3/8(9,52)        | 3/8(9,52)        | 3/8(9,52)        | 3/8(9,52)        | 3/8(9,52)        | 3/8(9,52)         |
| Pipe length range total <sup>6)</sup>                       |                     | m                       | 6-30             | 6-30             | 6-30             | 6-50             | 6-60             | 6-60             | 6-70             | 6-80              |
| Pipe length range to one unit                               |                     | m                       | 3-20             | 3-20             | 3-20             | 3-25             | 3-25             | 3-25             | 3-25             | 3-25              |
| Elevation difference (in/out)                               |                     | m                       | 10               | 10               | 10               | 15               | 15               | 15               | 15               | 15                |
| Pipe length for additional gas                              |                     | m                       | 20               | 20               | 20               | 30               | 30               | 30               | 45               | 45                |
| Additional gas amount                                       |                     | g/m                     | 15               | 15               | 15               | 20               | 20               | 20               | 20               | 20                |
| Refrigerant (R32)   |                     | kg/TCO <sub>2</sub> Eq. | 1,12/0,756       | 1,12/0,756       | 1,12/0,756       | 2,10/1,418       | 2,10/1,418       | 2,10/1,418       | 2,72/1,836       | 2,72/1,836        |
| Operating range   | Cool Min ~ Max      | °C                      | -10 ~ +46        | -10 ~ +46        | -10 ~ +46        | -10 ~ +46        | -10 ~ +46        | -10 ~ +46        | -10 ~ +46        | -10 ~ +46         |
|   | Heat Min ~ Max      | °C                      | -15 ~ +24        | -15 ~ +24        | -15 ~ +24        | -15 ~ +24        | -15 ~ +24        | -15 ~ +24        | -15 ~ +24        | -15 ~ +24         |

1) EER and COP calculation is based in accordance to EN14511. 2) Energy Label Scale from A+++ to D. 3) The annual energy consumption is calculated in accordance to EU/626/2011. 4) The sound pressure of the units shows the value measured of a position 1m in front of the main body and 0,8m below the unit. The sound pressure is measured in accordance with Eurovent 6/C/006-97 specification. 5) Add 70 or 95mm for piping port. 6) Minimum piping length is 3 meters per indoor unit. Minimum quantity of connection: 2 indoor units.

**How do I combine indoor and outdoor units?**

Each outdoor unit has a limit to the number of connecting indoor units, depending on capacity and the number of ports (rooms). To work out the correct combination, add the capacity index (kW) of each indoor unit you want to connect. The correct outdoor unit is the one that fits the total indoor capacity index within (and including) the minimum and maximum range. If there are several outdoor options to choose from, select higher or lower capacity outdoor depending on the simultaneous use you plan for your project.

**Possible outdoor / indoor units combinations • R32 GAS**

|                                     | Etherea Silver                        | Etherea White Matt                      | Wall Mounted TZ Compact Style           | NEW Floor Console*              | NEW 4 Way 60x60 Cassette        | NEW Low Static Pressure Hide Away     |
|-------------------------------------|---------------------------------------|---|---|---------------------------------|---------------------------------|---------------------------------------|
| <b>Indoor unit capacity index</b>   | 16 20 25 35 42 50 60 71               | 16 20 25 35 42 50 60 71                 | 16 20 25 35 42 50 60 71                 | 16 20 25 35 42 50 60 71         | 16 20 25 35 42 50 60 71         | 16 20 25 35 42 50 60 71               |
| <b>kW</b>                           | 1,6 2,0 2,5 3,5 4,2 5,0 6,0 7,1       | 1,6 2,0 2,5 3,5 4,2 5,0 6,0 7,1         | 1,6 2,0 2,5 3,5 4,2 5,0 6,0 7,1         | 1,6 2,0 2,5 3,5 4,2 5,0 6,0 7,1 | 1,6 2,0 2,5 3,5 4,2 5,0 6,0 7,1 | 1,6 2,0 2,5 3,5 4,2 5,0 6,0 7,1       |
| CU-2235TBE / 3,2 - 6,0kW / 2 Rooms  | ✓ ✓ ✓                                 | ✓ ✓ ✓ ✓                                 | ✓ ✓ ✓ ✓                                 | ✓ ✓ ✓                           | ✓ ✓ ✓                           | ✓ ✓ ✓                                 |
| CU-2241TBE / 3,2 - 6,0kW / 2 Rooms  | ✓ ✓ ✓                                 | ✓ ✓ ✓ ✓                                 | ✓ ✓ ✓ ✓                                 | ✓ ✓ ✓                           | ✓ ✓ ✓                           | ✓ ✓ ✓                                 |
| CU-2250TBE / 3,2 - 7,7kW / 2 Rooms  | ✓ ✓ ✓ ✓ <sup>1)</sup> ✓ <sup>1)</sup> | ✓ ✓ ✓ ✓ ✓ <sup>1)</sup> ✓ <sup>1)</sup> | ✓ ✓ ✓ ✓ ✓ <sup>1)</sup> ✓ <sup>1)</sup> | ✓ ✓ ✓ ✓ <sup>1)</sup>           | ✓ ✓ ✓ ✓ <sup>1)</sup>           | ✓ ✓ ✓ ✓ <sup>1)</sup>                 |
| CU-3252TBE / 4,5 - 9,5kW / 3 Rooms  | ✓ ✓ ✓ ✓ <sup>1)</sup> ✓ <sup>1)</sup> | ✓ ✓ ✓ ✓ ✓ <sup>1)</sup> ✓ <sup>1)</sup> | ✓ ✓ ✓ ✓ ✓ <sup>1)</sup> ✓ <sup>1)</sup> | ✓ ✓ ✓ ✓ <sup>1)</sup>           | ✓ ✓ ✓ ✓ <sup>1)</sup>           | ✓ ✓ ✓ ✓ <sup>1)</sup>                 |
| CU-3268TBE / 4,5 - 11,2kW / 3 Rooms | ✓ ✓ ✓ ✓ <sup>1)</sup> ✓ <sup>1)</sup> | ✓ ✓ ✓ ✓ ✓ <sup>1)</sup> ✓ <sup>1)</sup> | ✓ ✓ ✓ ✓ ✓ <sup>1)</sup> ✓ <sup>1)</sup> | ✓ ✓ ✓ ✓ <sup>1)</sup>           | ✓ ✓ ✓ ✓ <sup>1)</sup>           | ✓ ✓ ✓ ✓ <sup>1)</sup> ✓ <sup>1)</sup> |
| CU-4268TBE / 4,5 - 11,5kW / 4 Rooms | ✓ ✓ ✓ ✓ <sup>1)</sup> ✓ <sup>1)</sup> | ✓ ✓ ✓ ✓ ✓ <sup>1)</sup> ✓ <sup>1)</sup> | ✓ ✓ ✓ ✓ ✓ <sup>1)</sup> ✓ <sup>1)</sup> | ✓ ✓ ✓ ✓ <sup>1)</sup>           | ✓ ✓ ✓ ✓ <sup>1)</sup>           | ✓ ✓ ✓ ✓ <sup>1)</sup> ✓ <sup>1)</sup> |
| CU-4280TBE / 4,5 - 14,7kW / 4 Rooms | ✓ ✓ ✓ ✓ <sup>1)</sup> ✓ <sup>1)</sup> | ✓ ✓ ✓ ✓ ✓ <sup>1)</sup> ✓ <sup>1)</sup> | ✓ ✓ ✓ ✓ ✓ <sup>1)</sup> ✓ <sup>1)</sup> | ✓ ✓ ✓ ✓ <sup>1)</sup>           | ✓ ✓ ✓ ✓ <sup>1)</sup>           | ✓ ✓ ✓ ✓ <sup>1)</sup> ✓ <sup>1)</sup> |
| CU-5290TBE / 4,5 - 18,3kW / 5 Rooms | ✓ ✓ ✓ ✓ <sup>1)</sup> ✓ <sup>1)</sup> | ✓ ✓ ✓ ✓ ✓ <sup>1)</sup> ✓ <sup>1)</sup> | ✓ ✓ ✓ ✓ ✓ <sup>1)</sup> ✓ <sup>1)</sup> | ✓ ✓ ✓ ✓ <sup>1)</sup>           | ✓ ✓ ✓ ✓ <sup>1)</sup>           | ✓ ✓ ✓ ✓ <sup>1)</sup> ✓ <sup>1)</sup> |

1) A CZ-MA1P pipe reducer is needed on the 42 and 50, a CZ-MA2P pipe expander is needed on the 60 and CZ-MA3P pipe reducer on the 71. \* Compatible only with 2 ports Outdoor CU-2235TBE / CU-2241TBE / CU-2250TBE.

**Outdoor Multi combination model**

|  | Model  |
|--|--|
| CS-MZ16TKE / CS-MT216TKE<br>CS-XZ20TKEW / CS-Z20TKEW / CS-TZ20TKEW-1 / CS-MZ20UFEA / CS-MZ20UB4EA / CS-MZ20UD3EA<br>CS-XZ25TKEW / CS-Z25TKEW / CS-TZ25TKEW-1 / CS-Z25UFEAW / CS-Z25UB4EAW / CS-Z25UD3EAW<br>CS-XZ35TKEW / CS-Z35TKEW / CS-TZ35TKEW-1 / CS-Z35UFEAW / CS-Z35UB4EAW / CS-Z35UD3EAW | CU-2235TBE / CU-2241TBE /<br>CU-2250TBE / CU-3252TBE /<br>CU-3268TBE / CU-4268TBE /<br>CU-4280TBE / CU-5290TBE |
| CS-Z42TKEW / CS-TZ42TKEW-1<br>CS-XZ50TKEW / CS-Z50TKEW / CS-TZ50TKEW / CS-Z50UFEAW / CS-Z50UB4EAW / CS-Z50UD3EAW   | CU-2250TBE / CU-3252TBE /<br>CU-3268TBE / CU-4268TBE /<br>CU-4280TBE / CU-5290TBE                              |
| CS-TZ60TKEW / CS-Z60UB4EAW / CS-Z60UD3EAW  | CU-3268TBE / CU-4268TBE /<br>CU-4280TBE / CU-5290TBE   |
| CS-Z71TKEW / CS-TZ71TKEW   | CU-4280TBE / CU-5290TBE  |

\* For CZ-MA3P necessary to use adaptor CZ-MA2P too.

CZ-MA1P is to be used to reduce the connection size on the indoor unit from 1/2" to 3/8". CZ-MA2P is to be used to increase the connection size on the outdoor unit from 3/8" to 1/2". CZ-MA3P is to be used to reduce the connection size on the indoor unit from 5/8" to 1/2".



IF DESIGN AWARD 2017: Etherea White awarded with the prestigious IF Design Award 2017. INTERNET CONTROL: Optional.



| Wall Mounted Etherea | Indoor unit Silver | Indoor unit White Matt | Cooling capacity<br>kW / kCal/h | Heating capacity<br>kW / kCal/h | Connection<br>mm | Sound pressure <sup>1</sup><br>Cool — Heat (Hi/Lo/S-Lo) |  | Dimension / Net weight<br>HxWxD |  | Piping connections<br>Liquid / Gas pipe |  |
|----------------------|--------------------|------------------------|---------------------------------|---------------------------------|------------------|---|--|---------------------------------|--|---|--|
|                      |                    |                        |                                 |                                 |                  | dB(A)   |  | mm / kg                         |  | Inch (mm)                               |  |
| 1,6kW                | —                  | CS-MZ16TKE             | 1,60/1380                       | 2,60/2240                       | 4x1,5            | 38/26/21 — 39/27/21                                     |  | 295x919x194/9                   |  | 1/4(6,35)/3/8(9,52)                     |  |
| 2,0kW                | CS-XZ20TKEW        | CS-Z20TKEW             | 2,00/1720                       | 3,20/2750                       | 4x1,5            | 39/26/21 — 40/27/21                                     |  | 295x919x194/9                   |  | 1/4(6,35)/3/8(9,52)                     |  |
| 2,5kW                | CS-XZ25TKEW        | CS-Z25TKEW             | 2,50/2150                       | 3,60/3100                       | 4x1,5            | 41/27/21 — 43/29/21                                     |  | 295x919x194/10                  |  | 1/4(6,35)/3/8(9,52)                     |  |
| 3,5kW                | CS-XZ35TKEW        | CS-Z35TKEW             | 3,20/2750                       | 4,50/3870                       | 4x1,5            | 44/30/21 — 45/35/21                                     |  | 295x919x194/10                  |  | 1/4(6,35)/3/8(9,52)                     |  |
| 4,2kW                | —                  | CS-Z42TKEW             | 4,00/3440                       | 5,60/4820                       | 4x1,5            | 44/33/27 — 45/37/31                                     |  | 295x919x194/10                  |  | 1/4(6,35)/1/2(12,70)                    |  |
| 5,0kW                | CS-XZ50TKEW        | CS-Z50TKEW             | 5,00/4300                       | 6,80/5850                       | 4x1,5            | 44/39/32 — 46/39/32                                     |  | 302x1120x236/12                 |  | 1/4(6,35)/1/2(12,70)                    |  |
| 7,1kW                | —                  | CS-Z71TKEW             | 7,10/6110                       | 8,60/7395                       | —                | 49/40/32 — 49/40/32                                     |  | 302x1120x236/13                 |  | 1/4(6,35)/5/8(15,88)                    |  |



| Wall Mounted TZ Compact Style | Indoor unit White Matt | Cooling capacity<br>kW / kCal/h | Heating capacity<br>kW / kCal/h | Connection<br>mm | Sound pressure <sup>1</sup><br>Cool — Heat (Hi/Lo/S-Lo) |  | Dimension / Net weight<br>HxWxD |  | Piping connections<br>Liquid / Gas pipe |  |
|-------------------------------|------------------------|---------------------------------|---------------------------------|------------------|---|--|---------------------------------|--|---|--|
|                               |                        |                                 |                                 |                  | dB(A)   |  | mm / kg                         |  | Inch (mm)                               |  |
| 1,6kW                         | CS-MTZ16TKE            | 1,60/1380                       | 2,60/2240                       | 4x1,5            | 38/27/22 — 39/28/24                                     |  | 290x799x197/8                   |  | 1/4(6,35)/3/8(9,52)                     |  |
| 2,0kW                         | CS-TZ20TKEW-1          | 2,00/1720                       | 3,20/2750                       | 4x1,5            | 39/27/22 — 40/28/24                                     |  | 290x799x197/8                   |  | 1/4(6,35)/3/8(9,52)                     |  |
| 2,5kW                         | CS-TZ25TKEW-1          | 2,50/2150                       | 3,60/3100                       | 4x1,5            | 42/28/22 — 42/29/24                                     |  | 290x799x197/8                   |  | 1/4(6,35)/3/8(9,52)                     |  |
| 3,5kW <sup>2</sup>            | CS-TZ35TKEW-1          | 3,50/3010                       | 4,50/3870                       | 4x1,5            | 44/32/22 — 44/35/24                                     |  | 290x799x197/8                   |  | 1/4(6,35)/3/8(9,52)                     |  |
| 4,2kW                         | CS-TZ42TKEW-1          | 4,20/3610                       | 5,00/4300                       | 4x1,5            | 44/33/31 — 46/37/30                                     |  | 290x799x197/8                   |  | 1/4(6,35)/1/2(12,70)                    |  |
| 5,0kW                         | CS-TZ50TKEW            | 5,00/4300                       | 5,30/4558                       | 4x1,5            | 44/39/36 — 46/39/36                                     |  | 302x1102x244/12                 |  | 1/4(6,35)/1/2(12,70)                    |  |
| 6,0kW                         | CS-TZ60TKEW            | 6,00/5160                       | 8,50/7310                       | 4x1,5            | 44/39/36 — 47/39/36                                     |  | 302x1102x244/12                 |  | 1/4(6,35)/5/8(15,88)                    |  |
| 7,1kW                         | CS-TZ71TKEW            | 7,10/6110                       | 8,90/7654                       | —                | 49/40/37 — 49/40/37                                     |  | 302x1102x244/13                 |  | 1/4(6,35)/5/8(15,88)                    |  |

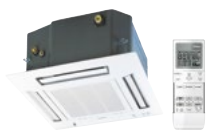


NEW 18

SUPER QUIET: For CS-Z25UFEAW and CS-Z35UFEAW. INTERNET CONTROL: Optional.



| NEW Floor Console <sup>3*</sup> | Indoor      | Cooling capacity<br>kW / kCal/h | Heating capacity<br>kW / kCal/h | Connection<br>mm | Sound pressure <sup>1</sup><br>Cool — Heat (Hi/Lo/S-Lo) |  | Dimension / Net weight<br>HxWxD |  | Piping connections<br>Liquid / Gas pipe |  |
|---------------------------------|-------------|---------------------------------|---------------------------------|------------------|---|--|---------------------------------|--|---|--|
|                                 |             |                                 |                                 |                  | dB(A)   |  | mm / kg                         |  | Inch (mm)                               |  |
| 2,0kW                           | CS-MZ20UFEA | 2,00/1720                       | 3,20/2750                       | 4x1,5            | —   |  | 600x750x207/13                  |  | —                                       |  |
| 2,8kW                           | CS-Z25UFEAW | 2,80/2410                       | 3,60/3100                       | 4x1,5            | 38/25/20 — 38/25/19                                     |  | 600x750x207/13                  |  | 1/4(6,35)/3/8(9,52)                     |  |
| 3,5kW <sup>2</sup>              | CS-Z35UFEAW | 3,50/3010                       | 4,50/3870                       | 4x1,5            | 39/26/20 — 39/26/19                                     |  | 600x750x207/13                  |  | 1/4(6,35)/3/8(9,52)                     |  |
| 5,0kW                           | CS-Z50UFEAW | 5,00/4300                       | 5,30/4558                       | 4x1,5            | 44/31/27 — 46/33/29                                     |  | 600x750x207/13                  |  | 1/4(6,35)/1/2(12,70)                    |  |



NEW 18

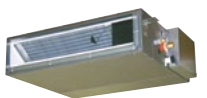


NEW CZ-BT20EW RAL9010 panel for 4 Way 60x60 Cassette (sold separately)

SUPER QUIET: For CS-Z25UB4EAW. INTERNET CONTROL READY and EASY CONTROL by BMS: Optional.



| NEW 4 Way 60x60 Cassette <sup>*</sup> | Indoor / Panel           | Cooling capacity<br>kW / kCal/h | Heating capacity<br>kW / kCal/h | Connection<br>mm | Sound pressure <sup>1</sup><br>Cool — Heat (Hi/Lo/S-Lo) |  | Dimension / Net weight<br>Indoor HxWxD Panel HxWxD |  | Piping connections<br>Liquid / Gas pipe |  |
|---------------------------------------|--------------------------|---------------------------------|---------------------------------|------------------|---|--|--|--|---|--|
|                                       |                          |                                 |                                 |                  | dB(A)   |  | mm / kg  |  | Inch (mm)                               |  |
| 2,0kW                                 | CS-MZ20UB4EA / CZ-BT20EW | 2,00/1720                       | 3,20/2750                       | 4x1,5            | —   |  | 260x575x575/18 51x700x700/2,5                      |  | —                                       |  |
| 2,5kW                                 | CS-Z25UB4EAW / CZ-BT20EW | 2,80/2410                       | 3,60/3100                       | 4x1,5 to 2,5     | 34/25/22 — 35/28/25                                     |  | 260x575x575/18 51x700x700/2,5                      |  | 1/4(6,35)/3/8(9,52)                     |  |
| 3,5kW <sup>2</sup>                    | CS-Z35UB4EAW / CZ-BT20EW | 3,50/3010                       | 4,50/3870                       | 4x1,5 to 2,5     | 34/26/23 — 35/28/25                                     |  | 260x575x575/18 51x700x700/2,5                      |  | 1/4(6,35)/3/8(9,52)                     |  |
| 5,0kW                                 | CS-Z50UB4EAW / CZ-BT20EW | 5,00/4300                       | 5,30/4558                       | 4x1,5 to 2,5     | 37/28/25 — 38/29/26                                     |  | 260x575x575/18 51x700x700/2,5                      |  | 1/4(6,35)/1/2(12,70)                    |  |
| 6,0kW                                 | CS-Z60UB4EAW / CZ-BT20EW | 6,00/5160                       | 8,50/7310                       | 4x1,5 to 2,5     | 42/32/29 — 43/32/29                                     |  | 260x575x575/18 51x700x700/2,5                      |  | 1/4(6,35)/1/2(12,70)                    |  |



NEW 18

INTERNET CONTROL READY and EASY CONTROL by BMS: Optional.



| NEW Low Static Pressure Hide Away <sup>*</sup> | Indoor       | Cooling capacity<br>kW / kCal/h | Heating capacity<br>kW / kCal/h | Connection<br>mm | Sound pressure <sup>1</sup><br>Cool — Heat (Hi/Lo/S-Lo) |  | Dimension / Net weight<br>HxWxD |  | Piping connections<br>Liquid / Gas pipe |  |
|--|--------------|---------------------------------|---------------------------------|------------------|---|--|---------------------------------|--|---|--|
|  |              |                                 |                                 |                  | dB(A)   |  | mm / kg                         |  | Inch (mm)                               |  |
| 2,0kW  | CS-MZ20UD3EA | 2,00/1720                       | 3,20/2750                       | 4x1,5            | —   |  | 200x750x640/19                  |  | —                                       |  |
| 2,5kW  | CS-Z25UD3EAW | 2,50/2150                       | 3,60/3100                       | 4x1,5 to 2,5     | 33/27/24 — 35/27/24                                     |  | 200x750x640/19                  |  | 1/4(6,35)/3/8(9,52)                     |  |
| 3,5kW <sup>2</sup>                             | CS-Z35UD3EAW | 3,50/3010                       | 4,50/3870                       | 4x1,5 to 2,5     | 33/27/24 — 35/27/24                                     |  | 200x750x640/19                  |  | 1/4(6,35)/3/8(9,52)                     |  |
| 5,0kW  | CS-Z50UD3EAW | 5,00/4300                       | 5,30/4558                       | 4x1,5 to 2,5     | 39/29/26 — 39/30/27                                     |  | 200x750x640/19                  |  | 1/4(6,35)/1/2(12,70)                    |  |
| 6,0kW  | CS-Z60UD3EAW | 6,00/5160                       | 8,50/7310                       | 4x1,5 to 2,5     | 41/30/27 — 41/32/29                                     |  | 200x750x640/19                  |  | 1/4(6,35)/1/2(12,70)                    |  |

1) The sound pressure of the units shows the value measured at a position 1m in front of the main body. The sound pressure is measured in accordance with Eurovent 6/C/006-97 specification. 2) The heating capacity is 4,20kW connected to a CU-Z235TBE. 3) Compatible only with 2 ports Outdoor CU-Z235TBE / CU-Z241TBE / CU-Z250TBE. \* Tentative data.

## High performance and healthy air

**99%** nanoe™ utilises nano-technology fine particles to purify the air in the room. It works effectively on airborne and adhesive micro-organisms such as certain types of bacteria, viruses and mould.

**99%** nanoe™ X utilises nano-technology fine particles to purify the air in the room. It works effectively on airborne and adhesive micro-organisms.

**PM2.5 FILTER** Particulate matter (PM2.5) can be found suspended in the air, including dust, dirt, smoke and liquid droplets. This filter can catch PM2.5 particles including hazardous pollutants as well as house dust and pollen.

**20dB(A)** With Super Quiet technology our devices are much more quiet than a library (30dB(A)).

**HUMIDITY CONTROL** The Perfect Humidity Air controls the humidity level in the air to prevent over-dryness.

**AEROWINGS** More comfort with Aerowings. Direct airflow to ceiling to create shower cooling effect by twin flap built in indoor.

**-10°C** Down to -10°C in cooling only mode. The air conditioner works in cooling only mode with an outdoor temperature of -10°C.

**-15°C** Down to -15°C in heating mode. The air conditioner works in heat pump mode with an outdoor temperature as low as -15°C.

**R22 R410A R32 R410A/R22 RENEWAL** The Panasonic renewal system allows good quality existing R22 pipe work to be re-used whilst installing new high efficiency R410A systems..

**R410A R22 R410A/R22 RENEWAL** The Panasonic renewal system allows good quality existing R410A or R22 pipe work to be re-used whilst installing new high efficiency R32 systems.

## Energy saving

**38%** Intelligent Human Activity Sensor and Sunlight Sensor technologies that can detect and reduce waste of energy by optimising air conditioner according to room conditions. With just one touch of a button, you can save energy.

**INVERTER+** Inverter Plus System classification highlight the Panasonic highest performing systems

**R2 ROTARY COMPRESSOR** Panasonic R2 Rotary Compressor. Designed to withstand extreme conditions, it delivers high performance and efficiency.

**R32** Our heat pumps containing the refrigerant R32 show a drastic reduction in the value of Global Warming Potential (GWP). An important step to reduce greenhouse gases. R32 is also a components refrigerant, making it easy to recycle.

## High connectivity

**INTERNET CONTROL** This unit is ready to connect to internet and be managed by smartphone, with a powerful and user friendly App to manage the comfort wherever you are.

**INTEGRATION P-LINE** Ready to be integrated and be managed by Panasonic centralized systems with CZ-CAPRA1.

**BMS CONNECTIVITY** Communication port to integrate the unit to home and building management systems most known standards.

**5 YEARS WARRANTY** We guarantee the outdoor unit compressors in the entire range for five years.

**DESIGN AWARD 2017** The iF Product Design Awards are among the most prestigious awards for product design excellence. Winning the award thanks to its highly intelligent functionality, the Panasonic Etherea is the ideal air-conditioning system for domestic and commercial applications.

| Outdoor unit features                | Refrigerant R32 | SEER         | SCOP         | Inverter+ system | R2 Rotary Compressor | Down to -10°C in cooling only                 | Down to -15°C in heating mode | R410A/R22 Renewal              | Warranty on the compressor |
|--------------------------------------|-----------------|--------------|--------------|------------------|----------------------|---|-------------------------------|--------------------------------|----------------------------|
| CU-2Z35TBE / CU-2Z41TBE / CU-2Z50TBE |                 |              |              |                  |                      |   |                               |                                |                            |
| CU-3Z52TBE / CU-3Z68TBE              | ✓               | 8,50         | 4,60         | ✓                | ✓                    | ✓   | ✓                             | ✓                              | ✓                          |
| CU-4Z68TBE / CU-4Z80TBE              | ✓               | 8,00<br>7,90 | 4,20<br>4,70 | ✓                | ✓                    | ✓   | ✓                             | ✓                              | ✓                          |
| CU-5Z90TBE                           | ✓               | 8,50         | 4,68         | ✓                | ✓                    | ✓   | ✓                             | ✓                              | ✓                          |
| Indoor unit features                 | Econavi         | nanoe™       | nanoe™X      | PM2,5 Filter     | Aerowings            | Super Quiet*                                  | Internet Control (Optional)   | Easy control by BMS (Optional) |                            |
| Wall Mounted Etherea                 |                 |              |              |                  |                      |   |                               |                                |                            |
| New Wall Mounted TZ Compact Style    | ✓               | ✓            |              | ✓                | ✓                    | ✓ 21dB(A) for MZ16, XZ/Z20, XZ/Z25 and XZ/Z35 | ✓                             | ✓                              |                            |
| Floor Console                        |                 |              | ✓            |                  |                      | ✓ 20dB(A) for Z25/35                          | ✓                             | ✓                              |                            |
| 4-Way 60x60 Cassette                 |                 |              |              |                  |                      | ✓ 22dB(A) for Z25                             | ✓                             | ✓                              |                            |
| Low Static Pressure Hide Away        |                 |              |              |                  |                      |   | ✓                             | ✓                              |                            |

\* At the lowest fan speed. 1) Energy Label Scale from A+++ to D



# Panasonic

To find out how Panasonic cares for you, log on to: [www.aircon.panasonic.co.uk](http://www.aircon.panasonic.co.uk)

Contact Details:  
Telephone: 01344 853182  
uk-aircon@eu.panasonic.com

Address: Panasonic Air Conditioning  
Maxis 2  
Western Road  
Bracknell  
RG12 1RT

heating & cooling solutions



Due to the ongoing innovation of our products, the specifications of this catalogue are valid, typographic errors, and may be subject to minor modifications by the manufacturer without prior warning in order to improve the product. The total or partial reproduction of this catalogue is prohibited without the express authorisation of Panasonic Marketing Europe GmbH.