



A6 DUCT

With its compact design, the Midea A6 Ducted range can be easily mounted in a ceiling void in a commercial office or retail space and offers flexible control and easy maintenance.

FLEXIBLE AIR INTAKE POSITION

Air inlet direction is from rear as standard or can be changed to bottom.

BUILT-IN DRAIN PUMP

The built-in drain pump can lift the condensate water up to 750mm.

MULTI CHANNEL AIR FLOW DISTRIBUTION

The units are suitable for different room types, its multi channel air distribution gives you comfort in every corner.

VERTICAL MOUNTING

Option for vertical mounting of units is available upon request.

LED CHASSIS MOUNTED DISPLAY

Built-in display for easy trouble shooting and system information.

FRESH AIR INLET

Built-in fresh air inlet to create a more comfortable environment.

FLEXIBLE CONTROL AND EASY MAINTENANCE

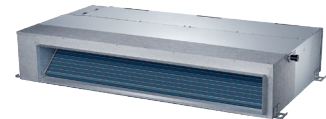
The electrical control box can be removed away from the unit for easy maintenance access. Standard functional ports are included such as remote On/Off, dry contact switch and alarm signal output.

TWIN COMBINATIONS

Outdoor unit sizes 36,42,48 & 55 can be installed with two indoor units for increased flexibility.

REMOTE SIGNAL

Built-in ports for on/off control and fault indication.



Indoor unit



Outdoor unit



Optional IR Remote Control



Remote Control



Optional WiFi Control



Adjustable Static Pressure Switch



Remote Enable Port



Error Alarm Port



Twin Combination



Wired Control



Refrigerant Leakage Detect



Louvre Position Memory



Fresh Air Inlet



Temperature Compensation



Anti-cold Air Function



2-way Draining



7-Day Timer



Low Ambient Cooling



Emergency Use Function



Central Control Management



Voice Control



Midea Air App



A6 DUCT

INDOOR			MTIU-12FNXD0	MTIU-18FNXD0	MTI-24FNXD0	MTI-36FNXD0
OUTDOOR			MOU-12FN8-QD6	MOUU-18FN8-QD0	MOU-24FN8-QD0	MOU-36FN8-QD0
Nominal Cooling Capacity (min-max)	kW		3.51(1.49-4.75)	5.28(2.55-6.15)	7.03(3.28-8.16)	10.55(4.04-12.02)
Nominal Heating Capacity (min-max)	kW		4.10(0.97-5.63)	5.57(2.20-7.03)	7.62(2.72-8.72)	11.14(2.81-13.19)
UK Total Cooling Capacity	kW		4.17	5.77	7.78	11.38
Seasonal Efficiency SEER / Class	W/W		6.5/A++	6.1/A++	6.1/A++	6.1/A++
Seasonal Efficiency SCOP / Class	W/W		4/A+	4/A+	4/A+	4/A+
Power Supply (Indoor)	V- Ph-Hz		Power from Outdoor	Power from Outdoor	220-240-1-50	220-240-1-50
Power Supply (Outdoor)	V- Ph-Hz		220-240-1-50	220-240-1-50	220-240-1-50	220-240-1-50
Cooling Current (min-max)	A		4.22(1.7-7.2)	7.2(3.2-8.3)	9.5(2.1-12.4)	17.5(4.2-19.6)
Heating Current (min-max)	A		5.0(1.7-9.0)	7(3.3-7.7)	8.9(2.2-12.5)	12.9(3.6-18.4)
Max. input current	A		10	13.5	13.5	21.5
Recommended Fuse Size (Indoor)	A		Power from Outdoor	Power from Outdoor	5* (or via outdoor)	5* (or via outdoor)
Recommended Fuse Size (Outdoor)	A		16	16	20	32
Interconnecting Wiring	No.		5 Core 1.5mm*	4 Core 1mm ²	2 Core 1mm ² Screened	2 Core 1mm ² Screened
Indoor Air Flow (High to Low)	m ³ /h		600/480/300	880/650/350	1248/1054/839	1400/1150/750
Indoor Sound Pressure Level (High to Low)	dB(A)		35/31/26	40/36/33	41/38/34	43/40/36
Indoor unit	Dimensions (WxDxH)	mm	700x450x200	880x674x210	1100x774x249	1360x774x249
	Packing (WxDxH)	mm	860x540x285	1070x725x280	1305x805x305	1570x805x305
	Net/Gross Weight	Kg	18/22	24.3/29.6	31.5/38.9	40.5/48.5
Drainage water pipe diameter	mm		ODØ25	ODØ25	ODØ25	ODØ25
Outdoor air flow	m ³ /h		2000	2000	2700	4000
Outdoor Sound Pressure Level	dB(A)		51	51	55	56
Outdoor unit	Dimensions (WxDxH)	mm	800x333x554	800x333x554	845x363x702	946x410x810
	Packing (WxDxH)	mm	920x390x625	920x390x625	965x395x775	1090x500x885
	Net/Gross Weight	Kg	34.7/37.5	33.7/36.6	49.4/52.8	66.8/73.4
Refrigerant	Type		R32	R32	R32	R32
	GWP		675	675	675	675
	Charged quantity	Kg	0.87	1.15	1.5	2.4
	Additional Charge	g/m	12	12	24	24
Refrigerant piping	Liquid side/ Gas side	mm(inch)	Ø6.35/Ø9.52(1/4"/3/8")	Ø6.35/Ø12.7(1/4"/1/2")	Ø9.52/Ø15.9(3/8"/5/8")	Ø9.52/Ø15.9(3/8"/5/8")
	Max. pipe length	m	25	30	50	65
	Max. difference in level	m	10	20	25	30
Operating temperature	Indoor (Cooling/Heating)	°C	17-32/0-30	17-32/0-31	17-32/0-32	17-32/0-33
	Outdoor (Cooling/Heating)	°C	-15-50/-15-24	-15-50/-15-25	-15-50/-15-26	-15-50/-15-27

*4 Core option is available

A6 DUCT

INDOOR		MTI-42FNXD0	MTI-36FNXD0	MTI-48FNXD0	MTI-55FNXD0	
OUTDOOR		MOU-42FN8-QD0	MOU-36FN8-RD0	MOU-48FN8-RD0	MOU-55FN8-RD0	
Nominal Cooling Capacity (min-max)	kW	12.31(2.58-13.7)	10.55(4.04-12.02)	14.07 (4.26-16.41)	15.24 (5.86-18.11)	
Nominal Heating Capacity (min-max)	kW	13.48(2.05-14.27)	11.14(2.81-13.19)	16.12(3.7-18.02)	18.17(4.69-20.52)	
UK Total Cooling Capacity	kW	12.13	11.38	15.54	16.89	
Seasonal Efficiency SEER / Class	W/W	6.1/A++	6.1/A++	6.1/A++	6.1/A++	
Seasonal Efficiency SCOP / Class	W/W	4/A+	4/A+	4/A+	4/A+	
Power supply (Indoor)	V- Ph-Hz	220-240-1-50	220-240-1-50	220-240-1-50	220-240-1-50	
Power supply (Outdoor)	V- Ph-Hz	220-240-1-50	380-415-3-50	380-415-3-50	380-415-3-50	
Cooling Current (min-max)	A	16(1.47-19.1)	6.5(1.4-8.2)	8.3(1.8-9.4)	8.93(2.0-11.6)	
Heating Current (min-max)	A	16.2(1.88-18.8)	4.7(1.3-7.4)	6.8(1.5-9.2)	8.8(1.6-10.5)	
Max. input current	A	23	10.4	14	15.4	
Recommended Fuse Size (Indoor)	A	5* (or via outdoor)	5* (or via outdoor)	5* (or via outdoor)	5* (or via outdoor)	
Recommended Fuse Size (Outdoor)	A	32	16	16	16	
Interconnecting Wiring	No.	2 Core 1mm ² Screened	2 Core 1mm ² Screened	2 Core 1mm ² Screened	2 Core 1mm ² Screened	
Indoor Air Flow (High to Low)	m ³ /h	1871/1574/1047	1400/1150/750	2400/2040/1680	2600/2210/1820	
Indoor Sound Pressure Level (High to Low)	dB(A)	45/42/40	43/40/36	45/42/40	45/42/40	
Indoor unit	Dimensions (WxDxH)	mm	1200x874x300	1360x774x249	1200x874x300	1200x874x300
	Packing (WxDxH)	mm	1405x915x355	1570x805x305	1405x915x355	1405x915x355
	Net/Gross Weight	Kg	47.6/55.8	40.5/48.5	47.6/55.8	47.6/55.8
Drainage water pipe diameter	mm	ODØ25	ODØ25	ODØ25	ODØ25	
Outdoor air flow	m ³ /h	3800	4000	7500	7500	
Outdoor Sound Pressure Level	dB(A)	57	56	59	59	
Outdoor unit	Dimensions (WxDxH)	mm	946x410x810	946x410x810	952x415x1333	952x415x1333
	Packing (WxDxH)	mm	1090x500x885	1090x500x885	1095x495x1480	1095x495x1480
	Net/Gross Weight	Kg	73.9/78.9	81.5/87.0	106.7/119.9	111.3/124.3
Refrigerant	Type		R32	R32	R32	R32
	GWP		675	675	675	675
	Charged quantity	Kg	2.4	2.4	2.8	2.95
	Additional Charge	g/m	24	24	24	24
Refrigerant piping	Liquid side/ Gas side	mm(inch)	Ø9.52/Ø15.9(3/8"/5/8")	Ø9.52/Ø15.9(3/8"/5/8")	Ø9.52/Ø15.9(3/8"/5/8")	Ø9.52/Ø15.9(3/8"/5/8")
	Max. pipe length	m	65	65	65	65
	Max. difference in level	m	30	30	30	30
Operating temperature	Indoor (Cooling/Heating)	°C	17-32/0-34	17-32/0-33	17-32/0-34	17-32/0-35
	Outdoor (Cooling/Heating)	°C	-15-50/-15-28	-15-50/-15-27	-15-50/-15-28	-15-50/-15-29

Nominal Conditions: Cooling; indoor 27°C DB, 19°C WB, outdoor 35°C DB, 24°C WB.
Nominal Conditions: Heating; indoor 20°C DB, outdoor 7°C DB, 6°C WB.

SEE QUICK REFERENCE GUIDE FOR REFRIGERANT CONTRIBUTIONS

*Option for power via Outdoor also available.

UK Conditions: Summer; indoor 21°C DB, 15°C WB, outdoor 27°C DB. Sound Pressure is measured 1.5m below the air-outlet at Nominal Conditions.