

## VERTU PLUS - WALL MOUNTED



# NEW FOR 2021

Available from 2.6kW to 4.0kW the Midea Vertu Plus wall mounted series achieves market leading energy efficiency with a SEER of 8.6 (A+++) and SCOP of 4.6 (A++). The stylish units, with attractive mirror finish change colour depending on the mode setting; trendy mode indicators light up blue when used for cooling and orange when used for heating.

### LEADING ENERGY EFFICIENCY

Energy class A+++ / A++

### UNIQUE V-SHAPED DESIGN WITH MIRROR EFFECT

The V-shaped design is the hallmark of the Midea Vertu Plus unit with an attractive mirror finish. Stylish mode indicators light up blue when used for cooling and orange when used for heating.

### SMART & INTELLIGENT CONTROL

Intelligent light control system with sleep function provides a more comfortable night's sleep.

### MIDEA PROACTIVE PURE

The new Midea Proactive Pure technology helps reduce odours, bacteria, dust and particles that are harmful to our health, for a cleaner, safer indoor environment.

### 'FOLLOW ME' SENSITIVE COOLING

Keep the remote close to you and it will measure the temperature around you and adjust comfort levels accordingly.

### WIDE ANGLE AIR FLOW

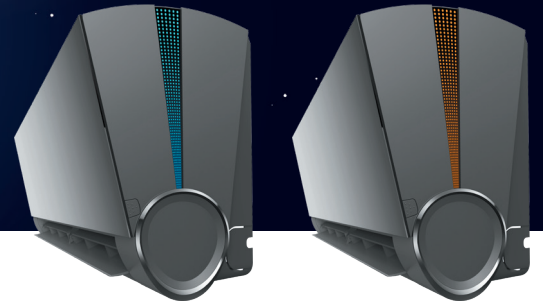
Horizontal and vertical auto swing and smooth long distance air flow up to 9m.

### EASY TO CLEAN

Easy opening panel with convenient hinge to keep it open when cleaning the air filter.

### WI-FI CONTROL

Control the air conditioner easily via the Midea Air APP on your smartphone. With just a simple swipe, you will be able to turn on/off the air conditioner and select the appropriate mode and temperature.



Indoor unit



Outdoor unit



IR Controller  
RG10-S  
(included)



Wired Controller  
KJR29B  
(optional)

- High Density Filter
- Cold Catalyst Filter
- Follow Me
- Emergency Use Function
- Self-Cleaning
- Low Ambient Cooling
- Refrigerant Leakage Detect
- Frost Protection
- Quiet Mode
- Super Cool
- iEco Mode
- 2-way Draining
- Louver Position Memory
- WiFi Control
- Auto-Restart
- Timer



Voice Control



Midea Air App

## VERTU PLUS - WALL MOUNTED



Indoor unit



Outdoor unit



IR Controller RG10-S  
(included)



Wired Controller KJR29B  
(optional)

INDOOR			MSVPBU-09HRFN8	MSVPBU-12HRFN8
OUTDOOR			MOX230-09HFN8	MOX230-12HFN8
Nominal Cooling Capacity (min-max)	kW		2.63 (1.02 - 3.22)	3.8 (1.377 - 4.30)
Nominal Heating Capacity (min-max)	kW		2.93 (0.82 - 3.37)	4.0 (1.06 - 4.38)
UK Total Cooling Capacity	kW		3.06	3.94
Power supply (indoor power via outdoor)	V-Hz-Ph		220-240V- 50Hz, 1Ph	220-240V- 50Hz, 1Ph
Cooling Current (min-max)	A		2.66 (0.4-4.7)	4.50 (0.6-7.2)
Heating Current (min-max)	A		2.77 (0.48-4.7)	4.47 (0.7-6.78)
Max. current	A		10.5	10.5
Outdoor Recommended Fuse Size	A		16	16
Interconnecting/Indoor Power Wiring	No.		5 Core 1.5mm*	5 Core 1.5mm*
Seasonal Efficiency SEER/Class	W/W		8.6/A+++	8.5/A+++
Seasonal Efficiency SCOP/Class	W/W		4.6/A++	4.6/A++
Indoor air flow (High- Low)	m <sup>3</sup> /h		558/478/384	558/478/384
Indoor Sound Pressure Level (High-Low)	dB(A)		37.5/32/24	37.5/32/24
Indoor unit	Dimensions (W*D*H)	mm	897/182/312	897/182/312
	Packing (W*D*H)	mm	985/265/385	985/265/385
	Net/Gross Weight	Kg	10.5/14.2	10.5/14.2
Outdoor air flow	m <sup>3</sup> /h		2200	2200
Outdoor sound pressure level	dB(A)		54	54
Outdoor unit	Dimensions (W*D*H)	mm	765x303x555	765x303x555
	Packing (W*D*H)	mm	887x337x610	887x337x610
	Net/Gross Weight	Kg	26.7/29.1	26.7/29.1
Refrigerant	Type		R32	R32
	GWP		675	675
	Charged quantity	Kg	0.62	0.62
	Additional Charge	g/m	12	12
Refrigerant piping	Liquid side/ Gas side	mm(inch)	φ6.35/φ9.52(1/4"/3/8")	φ6.35/φ9.52(1/4"/3/8")
	Max. refrigerant Pipe	m	25	25
	Max. height difference	m	10	10
Thermostat type			Remote Control	Remote Control
Operating temperature	Indoor (cooling/ heating)	°C	16-32/0-30	16-32/0-30
	Outdoor (cooling/heating)	°C	-15-50/-25-30	-15-50/-25-30

Nominal Conditions: Cooling; indoor 27°C DB, 19°C WB, outdoor 35°C DB, 24°C WB.  
Nominal Conditions: Heating; indoor 20°C DB, outdoor 7°C DB, 6°C WB.

UK Conditions: Summer: indoor 21°C DB, 15°C WB, outdoor 27°C DB.  
Sound Pressure is measured 1.0m below the air-outlet at Nominal Conditions.  
\*4 Core option is available